

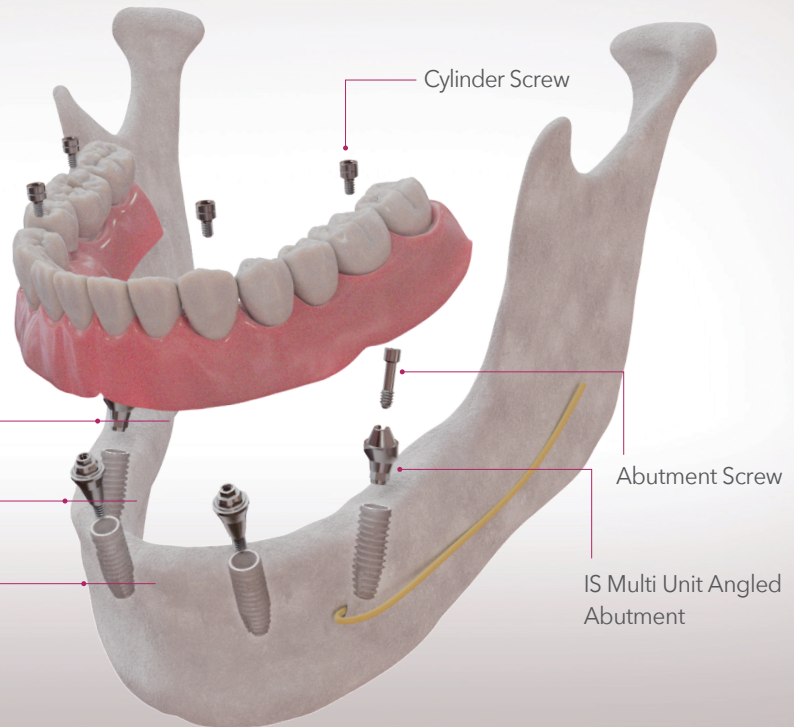
Fixed Full-Arch Prostheses



Prosthesis made with Cylinders

IS Multi Unit Abutment

IS-II / IS-III Fixture



Fixed implant-supported prostheses for full edentulous patients are now available with our Multi Unit Abutment System.

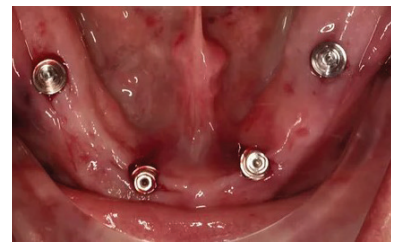
Clinical Case (Dr. Nalat Wongwatjana, Thailand)



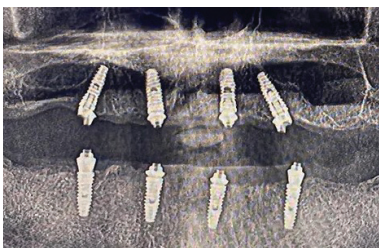
1. Pre-OP



2. Placement of 4 fixtures in the maxilla



3. Placement of 4 fixtures in the mandible



4. Radiograph



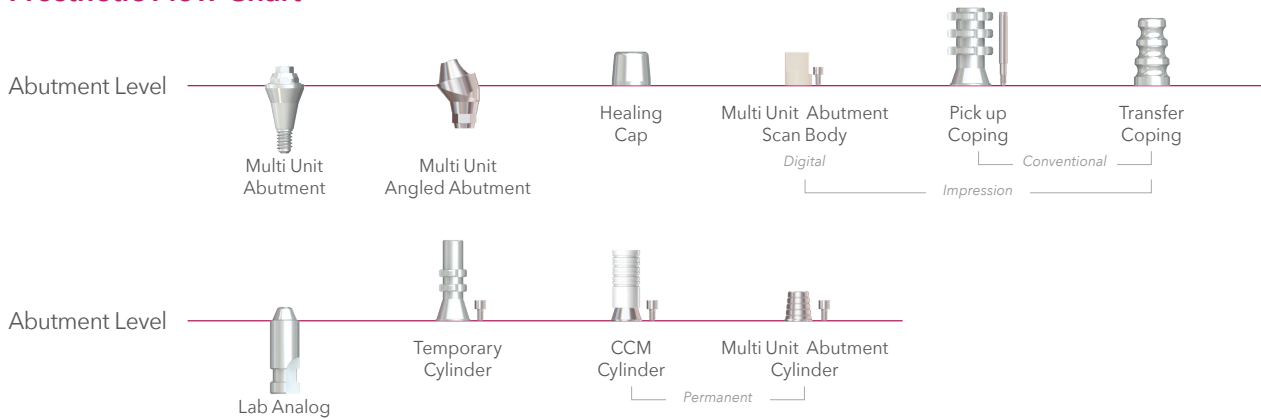
5. Fabricated prostheses



6. Completed treatment

Reference from GAO Open Forum

Prosthetic Flow Chart



IS Multi Unit Abutment



Cuff(mm)	1.0	2.0	3.0	4.0
Product name	ISMUA4810S	ISMUA4820S	ISMUA4830S	ISMUA4840S

* Holder included

- IS Multi Unit Abutments provide angled compensation up to 40° on both sides.
- Abutment Tightening Torque: 30 Ncm

IS Multi Unit Angled Abutments



Cuff(mm)		1.0	2.0	3.0	4.0
Hex	17°	ISAHMUA1410S	ISAHMUA1420S	ISAHMUA1430S	ISAHMUA1440S
	30°	ISAHMUA3410S	ISAHMUA3420S	ISAHMUA3430S	ISAHMUA3440S
Non-Hex	17°	ISANMUA1410S	ISANMUA1420S	ISANMUA1430S	ISANMUA1440S
	30°	ISANMUA3410S	ISANMUA3420S	ISANMUA3430S	ISANMUA3440S

* Holder & Abutment Screw included

- IS Multi Unit Angled Abutments provide angled compensation on both sides as bellow :
17 ° Multi Unit Angled Abutment up to 74° / 30 ° Multi Unit Angled Abutment up to 100°
- Abutment Tightening Torque: 30 Ncm

IS Multi Unit Components

* Tightening Torque : 15Ncm

Appearance	Product Name	Product Code	Intended Use
	Healing Cap	MUAHC48	Used for contouring the soft tissue
	Multi Unit Abutment Scan body	MUASB48	Used for taking of a digital impression
	Pick up Impression Coping	MUAIP48	Used for open tray impression technique
	Transfer Impression Coping	MUAIT48	Used for closed tray impression technique
	Lab Analog	MUALA48	Used for duplication of implant position
	Temporary Cylinder	MUATPCN48	Used for fabricating of temporary prosthesis
	CCM Cylinder*	MUACCN48	Used for fabricating permanent prosthesis with a conventional workflow
	Multi Unit Abutment Cylinder*	MUAC48	Used for fabricating permanent prosthesis with a digital workflow